



June 23rd
General Meeting

There will be a membership meeting on Tuesday, June 23rd at 6:00 PM. Location is to be determined.

PSG Art Swap
 An art swap amongst the membership at the Wikstrom Bros. gallery, 5411 Meridian N. The date will be Saturday April 11. Life member preview from 12-2pm and the general membership from 2-6pm. Artwork can be framed or not and refreshments will be provided. This is strictly for PSG members though the artwork can be by anyone. I will be offering some of my paintings and also E. Curtis photographs, some Japanese prints, early illustration work as well as pieces by PSG members living and deceased. Any questions can be directed to **Brom** at 206-285-2730 or bawikstrom@earthlink.net

Auction Postponed Until 2010

During the general membership meeting at Salty's Restaurant March 24, chairman of the Finance Committee, **Ted Panowski**, reported that he is recommending that the Annual Auction be postponed until 2010.

Ted's recommendation was based not only on the state of the economy but on the need for a positive commitment from the membership to provide names of patrons who can be invited to attend. The current mailing list, Ted said, could not be counted on to give the Group the rate of return that made the 2008 Auction a success. "Thanks to the hard work of the Board and of all involved in the last auction" he said "we netted enough to carry us through 2009 and well into 2010 without jeopardizing our programs or savings. We now need a similar commitment from the entire membership, not only for quality paintings but for potential patrons.

"Planning and budget preparation will begin right away" Ted concluded "but the Board may have to consider dues or another fundraising event to carry us to the Auction in late 2010. We will be calling on all the members for their active support." The 40 members in attendance greeted the report with applause.

Dear Members:

On behalf of EAFA, a heartfelt thank you to the Puget Sound Group of Northwest Painters for its generous donation to our 33rd Annual Open Art Exhibition. The Awards Ceremony and Artists Reception held on December 7, was very well attended by more than 400 friends, family, City of Redmond dignitaries and interested community members and was the perfect culmination to a beautiful show.

Your donation was awarded to artist People's Choice winner **Ranjini Venkatachari** for her beautiful colored pencil work depicted on the As you can imagine, anytime an artist receives an award, it is a great thrill and honor.



Thank you again for supporting the arts and EAFA.

Joy E. Hagen, Co-Chair
 EAFA 33rd Annual Open Exhibition

"Mutual Admiration II"

Board Meeting Minutes: March 10, 2009

Attendees: *Gary Nelson, Dan Riley, Mike Maher, Lyle Silver, Frank Gaffney, Paul Newman, Bill Wikstrom, Mark Foley and Ted Pankowski.*

The meeting was called to order at 6 pm. In the absence of *George Milliken*, minutes were taken by *Paul Newman*.

The question of the Group's having an auction this year was raised for discussion; *Ted Pankowski* presented a report of this matter, suggesting that success of an auction would be dependent upon a number of issues, principally that: PSG members would need to take responsibility for inviting prospective patrons. Use of funds from the Fidelity fund would be needed to finance the event. Professional assistance should be obtained as needed. Our mission as a 401c3 organization needs be refined. These matters were discussed in detail.

Ted and Paul Newman brought forth ideas from the Auction Workshop presented by Northwest Benefit Auctions on February 26. Many issues presented in the day-long event are thought pertinent to the needs of our group's presenting a successful fund-raising auction this year. *Paul Newman* raised point that aside from our auction, selections of our Group's artwork be made available on a consignment basis to other group's fundraising events. This, as a potential source of income, as well as a means of promotion for our Group. Motions to initiate the preliminaries of planning for an auction and for appointing *Ted Pankowski* as auction chairman were approved. Last year's venue, the Lynnwood Embassy

Suites Hotel, will be contacted regarding availability of dates. *Ted* will be preparing a draft budget for the auction for the upcoming members' meeting Tuesday, March 24.

April was suggested as the month for this year's the Painting Exchange Dinner; selection of date and venue are subject to further consideration.

The Board by majority vote extended regular membership to *Mark Foley*, an associate member since 2006.

Gary Nelson, acting as temporary chairman of the Membership committee, initiated discussion of its function and service to the Puget Sound group. *Ted Pankowski* introduced a detailed draft of a membership application. Details of the document are to set forth general description and philosophy of the Group, as well as criteria of eligibility and requirements for prospective members. A revised version of this form is to be made available for the March members' meeting.

Mention was made of the members' art to be presented at the March meeting; beyond the expected fun and interest, idea was raised by *Dan Riley* to consider such a body of work appropriate for gallery exhibition.

Pizza was served, and the meeting was adjourned after 8pm.

Respectfully submitted,
Paul Newman

General Meeting Minutes: March 24, 2009

The members' meeting at Salty's on Alki restaurant was called to order by President *Gary Nelson*. Reference was made to minutes of the previous meeting as posted in the newsletter. A brief report was made by Treasurer *Paul Newman*. Candidates *Greg Scott* and returning member *Kim Drew* were introduced by their sponsor *Lyle Silver* and accepted as members by vote following *Ted Pankowski's* motion to accept the nominees based upon earlier consideration by the Board of Directors (BOD). *Steve Hill* introduced his sponsored candidates *Matt Dollahite* and *Mark Bistranin* whose artworks were presented to the membership; their acceptance to the group will be decided by BOD decision.

The West Coast Paper Company's announcement of the termination of sponsorship of what had been for years an annual artists' exhibition was relayed by President *Nelson*. This decision was based on economic factors.

New officers were elected by majority vote of the members: *Dan Riley*-- **President**, *Mike Maher*-- **Vice President**, *Paul Newman*-- retained as **Treasurer**. The office of Secretary is yet to be filled.

President-elect *Dan Riley* presented general description of his proposed agenda, encouraging the membership to active participation in various committees whose chairs would assume positions on the Board of Directors responsible for conducting PSG affairs. *Dan* expressed especial need for new venues of fund-raising, accenting the group's non-profit charter of bringing art to the public.

Finance Committee chairman *Ted Pankowski* reported the group's current operating fund sufficient for activities through the remainder of this year and early into 2010. In the face of the present economic recession, decision was announced to **suspend plans for an auction banquet this year**. Plans are to commence in evaluation of our preparedness to successfully sponsor such event next year. Information gained from *Ted Pankowski* and *Paul Newman's* attendance at Northwest Benefit Auctions' recent fundraising seminar will be applied to this end. Sources of income for next year's operating expenses also need to be developed-- ideas (and participation) are encouraged. *Brom Wikstrom* invited members to participate in an informal 'art swap' at Arthead Gallery. The event, to be scheduled in a few weeks, will coincide with the gallery's closing.



Dan Riley our new President

(continued on page 3)

(continued from page 2)

Paintings by members' inspired by images of *Ned Mueller's* China trip were viewed and 'winners' announced in three categories: *Lyle Silver*-- landscape, *Ned Mueller*-- portrait, and *Frank Gaffney*-- seated figure. A painting by previous raffle winner *Mark Foley* was presented for raffle and won by *Steve Hill*, who will present an artwork for our next raffle.

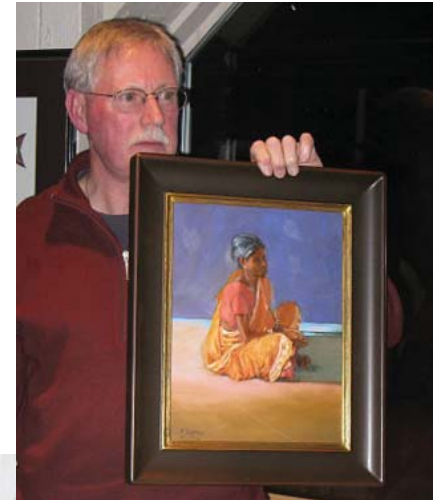
Phil Levine introduced his newly published book **Myth, Memory & Image**, illustrating artworks in a career spanning decades. His sculpture, drawings and paintings-- "Phillip Levine Survey" are on exhibit at the La Conner Museum of Northwest Art through June 14. *Phil* will be speaking there about his work at a book signing event Sunday, May 3, 2pm.

At the meeting's close, *Steve Hill* announced his Painting Workshop upcoming in Korcula, Croatia October 5 - 14, 2009. *Leon White* described a China tour available for artists conducted by his friend Della.

Respectfully submitted,
Paul Newman



Best landscape, Lyle Silver



Best seated figure, Frank Gaffney



Best portrait, Ned Mueller



Painting Workshop in Croatia 2009

Steve Hill is offering a 10 day plein air painting experience this October 5-14 on Korcula Island, near Dubrovnik on the south-

ern end of Croatia. Daily trips to sites around the island that only a native could provide will be led by Lynda Milina and her father, Nick, a native to Korcula and local vintner. Olive orchards, vineyards, private properties on the Adriatic Sea, the island at Ston, local artists' studios and the picturesque walled cities of Korcula and Dubrovnik are only a few of the locations to be toured. You may want to add a few days to the trip to explore nearby Greece or Italy.

Steve will be leading live daily demos, mainly in pastel, but all other mediums are acceptable to use. The 10 day experience is priced at approximately \$1500 U.S. dollars (painters

fee) and only \$1300 U.S. non-painters (spouse) and includes 3 meals per day, all ground transportation to and from sites, as well as to and from Dubrovnik (where you would fly in) and wonderful lodging accommodations at Lovric's pensione. There are still a few spots left, which must be booked by August 5th. Go to www.slikamilina.ca for full details or email Steve@windsweptstudios.com or call (360) 468-2557, for assistance in booking a space. Airlines are starting to offer huge discounts. You will need to book your own flights, as they are not included in the 10 day painting experience.

Showings:

Kirsten Gallery

Kirsten Gallery 35th Anniversary Show
(Miniature paintings by gallery artists)
March 15 - April 15, 2009
PSG members in this show are:
Rudy Bundas, Austin Dwyer, Mike Grygiel, Ted Pankowski, Jerry Stitt, Fred Thomas and Leon White.



Austin Dwyer, "Kerry, After the Catch"



Fred Thomas, "By Design"

Leon White

One of Leon's sculptures has been accepted for the "Animals in Art" International Exhibit at the Louisiana University School of Veterinary Medicine, Baton Rouge, LA. 1 of 75 chosen from 585 entries Internationally.



Travel with DELLA @ CHINAVISIONS .NET

By Leon White

Have you ever considered traveling to China? This is the time to plan a memorable trip while the exchange is great and China retains its traditional beauty and culture. Ned Mueller's slide show gave some of you a sampling of the beauty of China at our December meeting. I had a wonderful trip in 2007 with four carver friends. We went from Shanghai down the coast of the China Sea and visited jade and granite carving factories, a bronze foundry, and many unbelievable gardens, parks, museums, smaller cities and towns. We hired a private

English-speaking guide, Della, to plan our trip. You will enjoy your trip to China much more if you have an interpreter who can individualize your tour and arrange your travel and accommodations. Della speaks perfect English and specializes in families and small groups, particularly Artists who wish to experi-

ence the "less traveled areas" and experience true Chinese culture. The plans will include her fees and travel accommodations, also. Not counting the roundtrip airfare, our trip came to about \$50 per day for each of us. Contact her at Della@Chinavisions.net, Phone: 011-86-139-170-44455.

Keep an eye on the calendar each month, as some dates may change.

Calendar:

April 14	Board meeting
May 12	Board meeting
June 9	Board meeting
June 23.....	Membership meeting
July xx	Eagle Hbr paint-out
September 22	Membership meeting

Contacts:

Palette Talk Editor:..... Frank Gaffney - 425•820•2431, frankg@FrankGaffney.com
Web Master:..... Frank Gaffney
Treasurer: Paul Newman- 206•729•9955, pnewman@u.washington.edu
President of PSGNWP:..... Dan Riley - 425•213•3880, rileydk@comcast.net